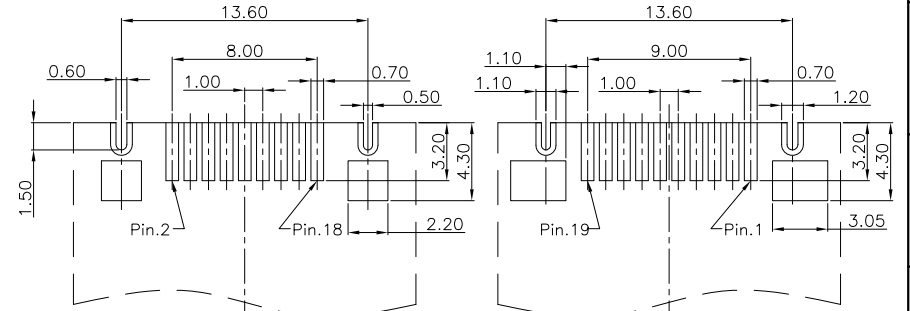
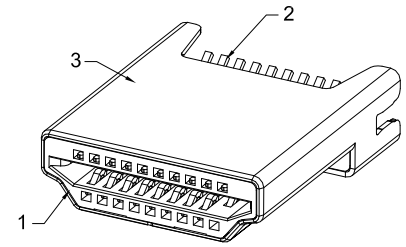
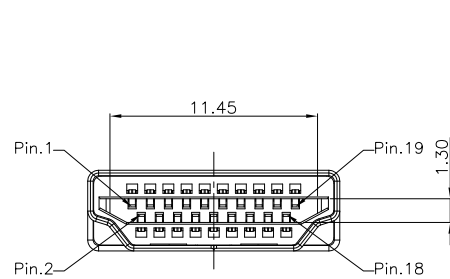


正式图 参考图

Mark	ECN NO.	DESCRIPTION	DESIGN	Date:
—	—	NEW VERSION	David Zhou	2018.02.27

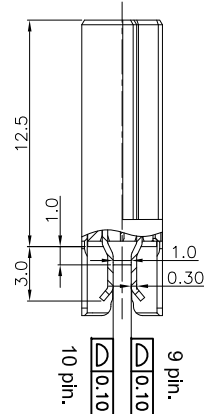
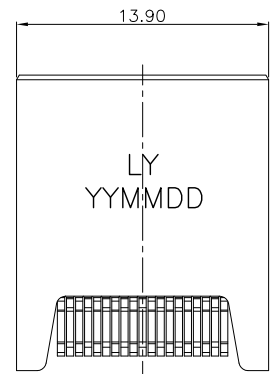
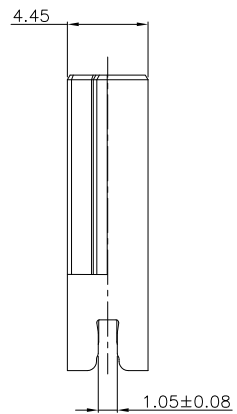
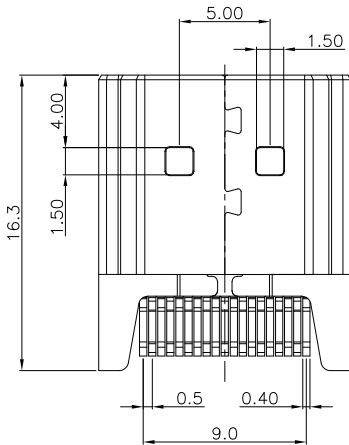


BOTTOM VIEW TOP VIEW

RECOMMENDED PCB LAYOUT
TOLERANCE:±0.05mm
PCB THICKNESS: 1.00±0.05mm

2	C1	LCP	UL94V-0	RoHS2 Fit (IR Reflow)
1	C0	LCP	UL94V-0	RoHS2&H.F Fit (IR Reflow)
NO.	CODE	MATERIAL	REMARK	

TABLE A : Plastical Material



LY
YYMMDD
YEAR DATE
MONTH

P/N: HD1122W-XXXX-19XXXXX

- Packing
 - B:Tray; R:Tape reel;
 - Remark
 - 0:Normal;
 - Shell Material
 - S:SUS 304
 - H:SPCC
 - Terminal Plating
 - A:CONTACT AREA:GOLD FALSH,SOLDER AREA:MATTE TIN80U"
 - B:CONTACT AREA:3U"GOLD,SOLDER AREA:MATTE TIN80U"
 - C:CONTACT AREA:5U"GOLD,SOLDER AREA:MATTE TIN80U"
 - D:CONTACT AREA:10U"GOLD,SOLDER AREA:MATTE TIN80U"
 - E:CONTACT AREA:15U"GOLD,SOLDER AREA:MATTE TIN80U"
 - F:CONTACT AREA:20U"GOLD,SOLDER AREA:MATTE TIN80U"
 - G:CONTACT AREA:30U"GOLD,SOLDER AREA:MATTE TIN80U"
- Model P/N
Plastical Material (Choose From Table A)
Housing Color
 01:Black
- PIN Number
- SHELL PLATING & SALT
 A:NI PLATING (8H)
 B:NI PLATING (24H)

3	SHELL	1	SEE PN	NICKEL 50u"min. PLATING OVER ALL.	-
2	TERMINAL	19	Phosphor Bronze	Contact Area : Gold Plated Solder Area : Tin Plated (80u" min.)	-
1	HOUSING	1	LCP	Choose from P/N item color	-
NO.	DESCRIPTION	QTY	PARTS MATERIAL	PLATING OR COLOR	REMARK

Tolerance	MODEL NAME: HDMI,Type A Plug,19 POS.CONN.	DRAWING: David Zhou
X.X ±0.30	MODEL No:HD1122W-XXXX-XXXXXXX	CHECKED: David Zhou
X.XX ±0.20	SCALE:1:1	APPROVED: Jacky Lee
X.XXX ±0.10		REVISION A0
Angle ±3.0°	1/1	DATE: 2018.02.27
UNIT:mm	菱揚精密有限公司 Ling Yang Precision Co.,Ltd	FILE: CD/LINGYANG
		DWG NO. HD1122W-A001